

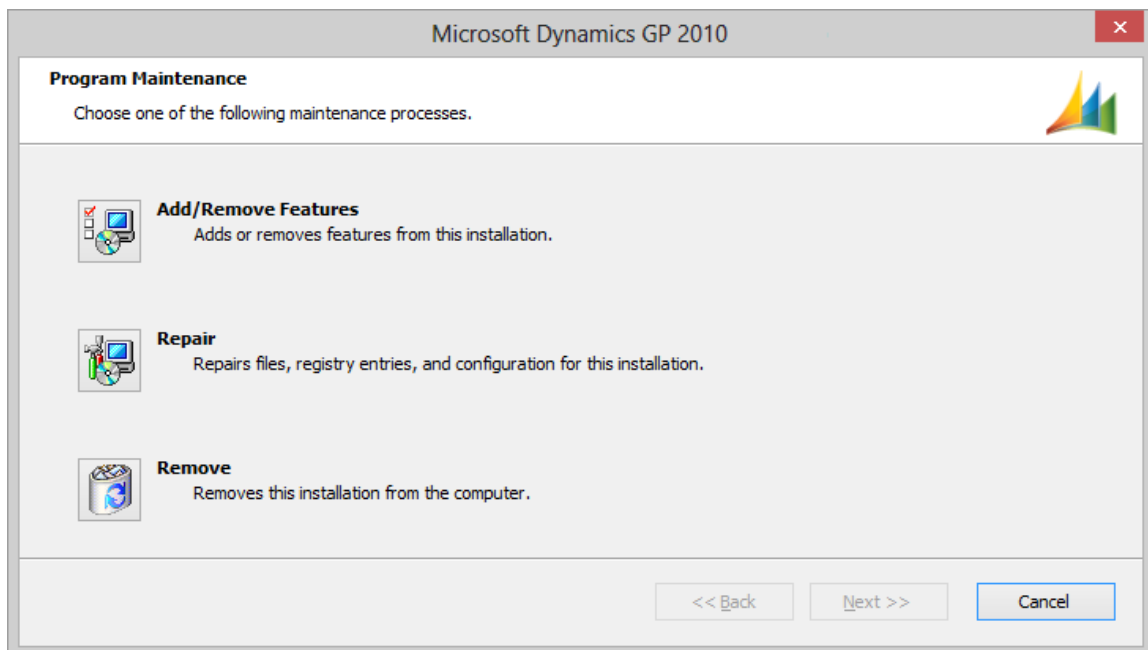
## Prerequisite

This install requires that Microsoft Dynamics GP SP3 (build 2044) or later be installed. You can find your version in Microsoft Dynamics GP by going to the Help button and selecting About Microsoft Dynamics GP.

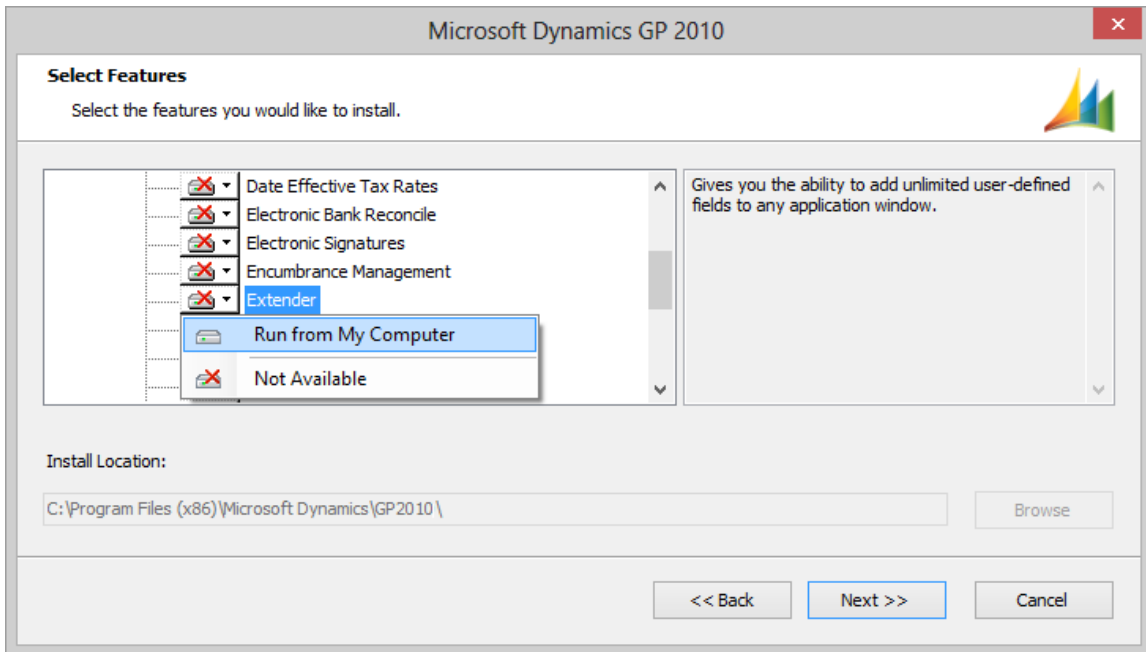
## Installation steps to install Extender on the SQL Server (or first workstation)

These steps will need to be completed to install Extender and create the SQL objects necessary to use Extender for Microsoft Dynamics GP 2010.

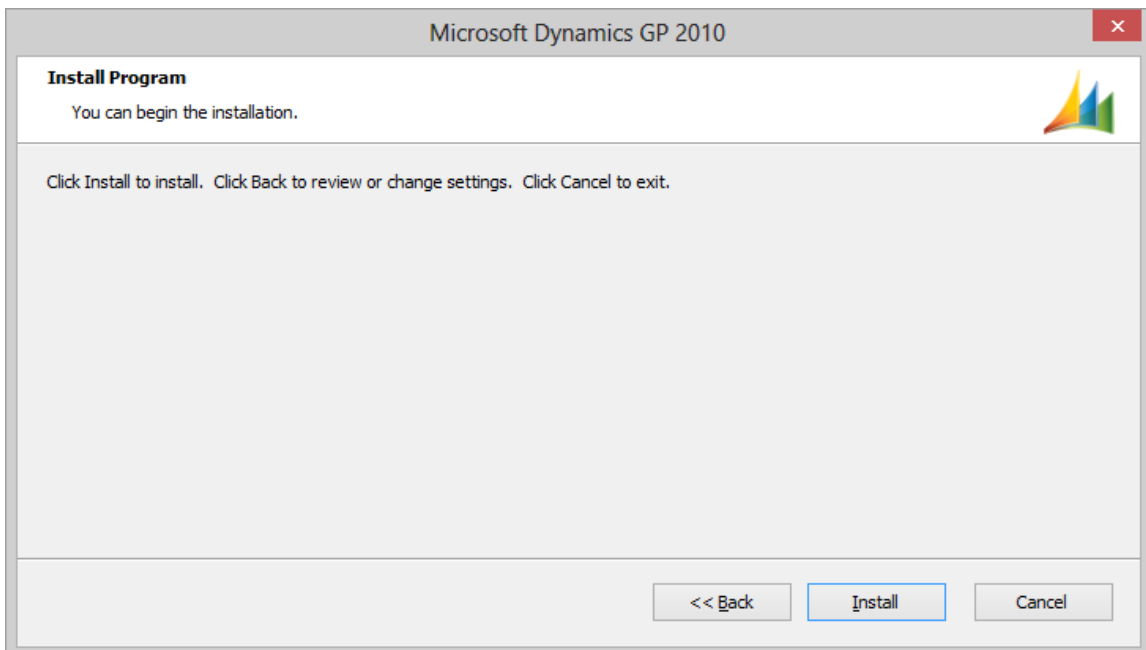
1. Make complete backups of the Microsoft Dynamics GP Dynamics and company databases in SQL.
2. Add Extender to the Microsoft Dynamics GP installation by going to Programs and Features (Add/Remove Programs) in the Control Panel.
3. Select Change on the Microsoft Dynamics GP installation.
4. When prompted, select Add/Remove Features.



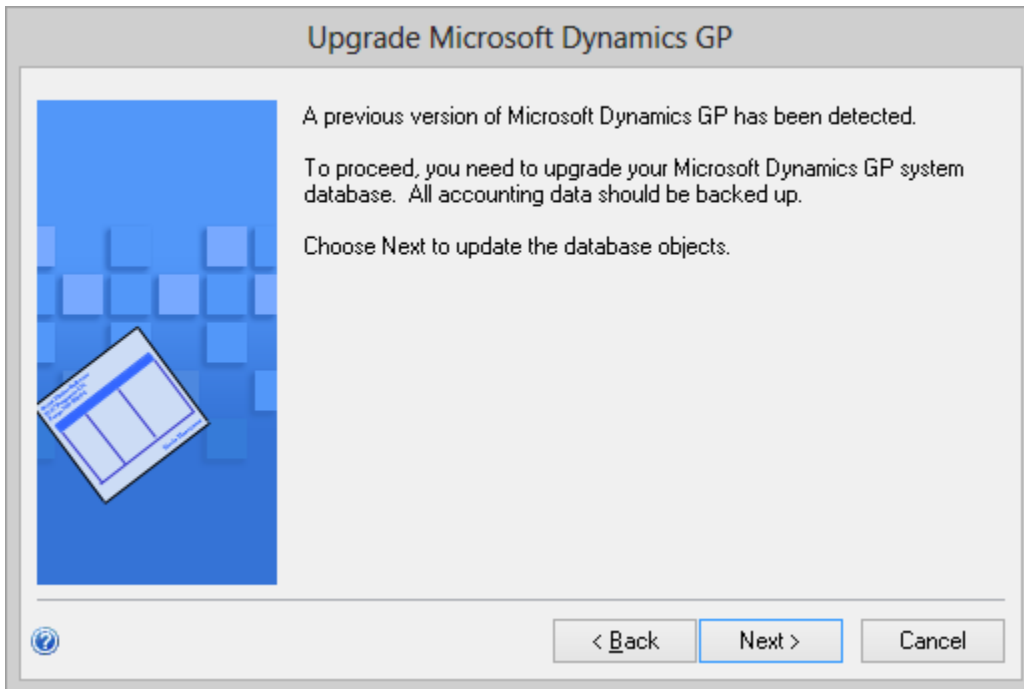
5. Scroll down in the list of features and find Extender. Right click on it and select “Run from My Computer”.



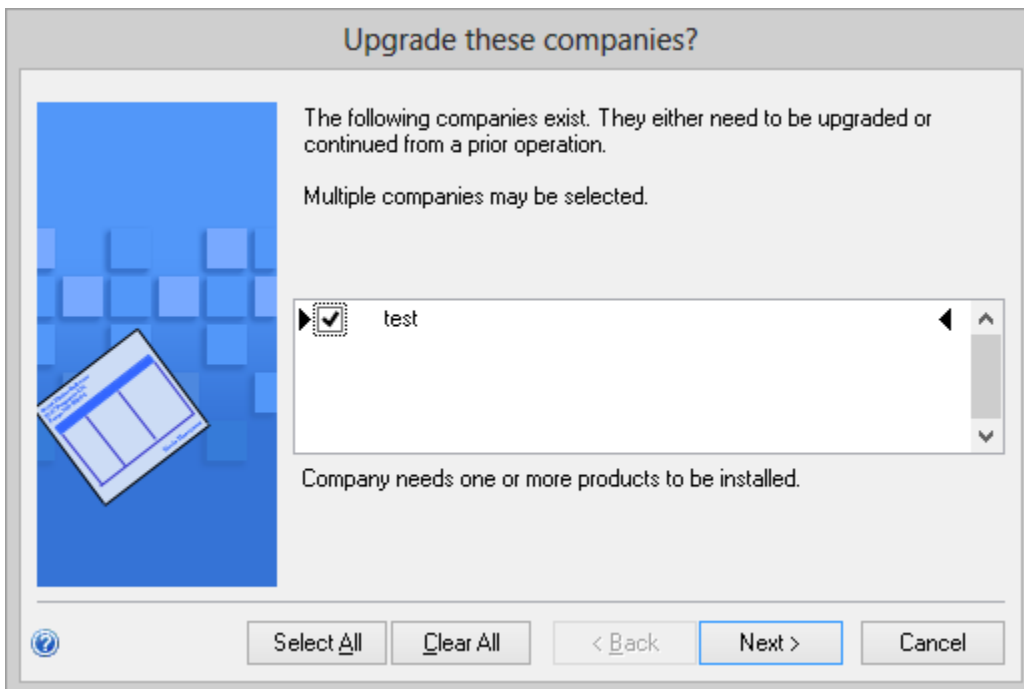
6. The Red X on the icon will disappear to show it is going to be available. Click Next.
7. Click Install to install the Extender Feature into Microsoft Dynamics GP.



8. Click Exit when the installation is complete.
9. Launch Microsoft Dynamics GP Utilities and login as 'sa' or another user with sysadmin permissions in SQL.
10. Click Next on the Welcome Screen.
11. Click Next on the Upgrade Microsoft Dynamics GP window to update the Dynamics database.

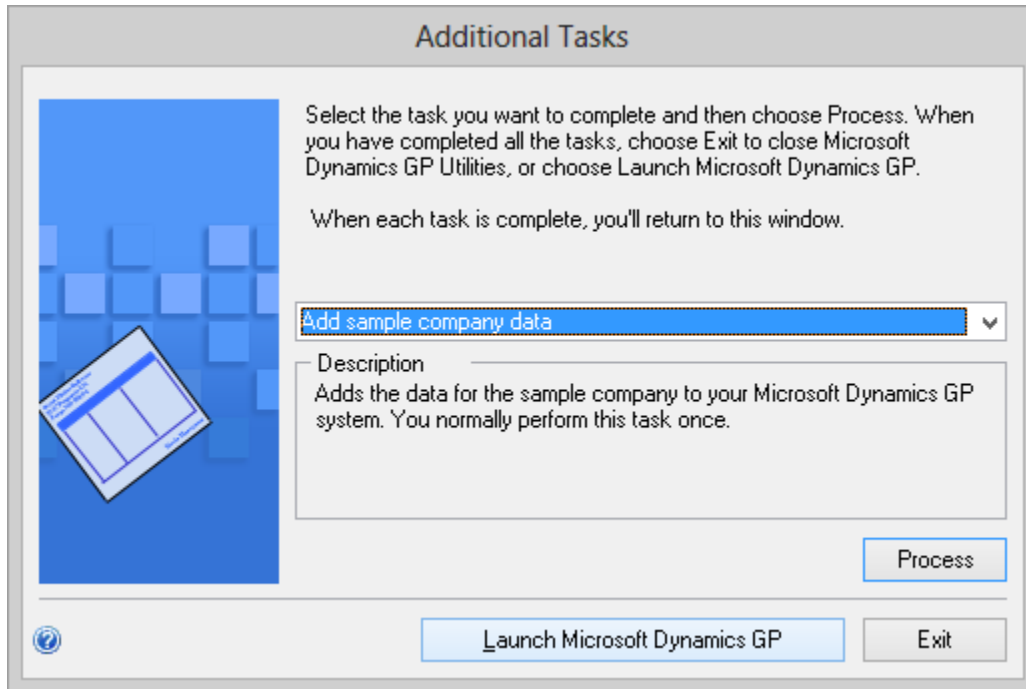


12. Mark all the companies on the Upgrade these companies? window. Click Next



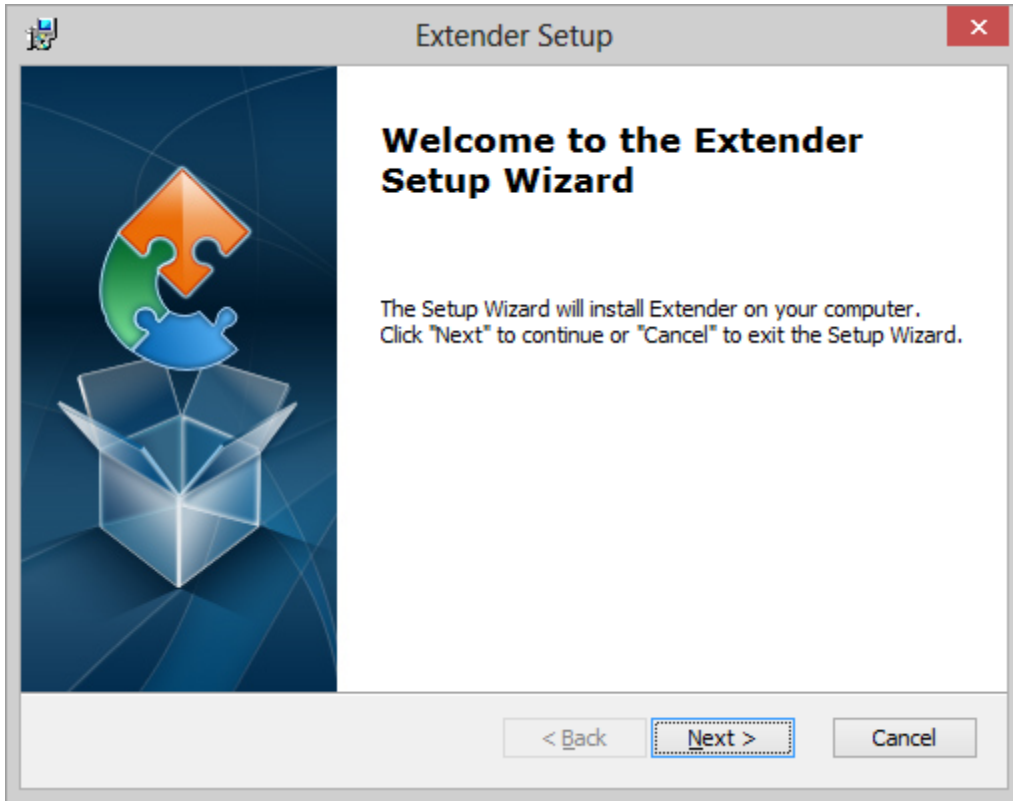
13. Click Finish on the Confirmation window.

14. Once the Server Installation Progress is complete, click Exit on the Additional Tasks window.

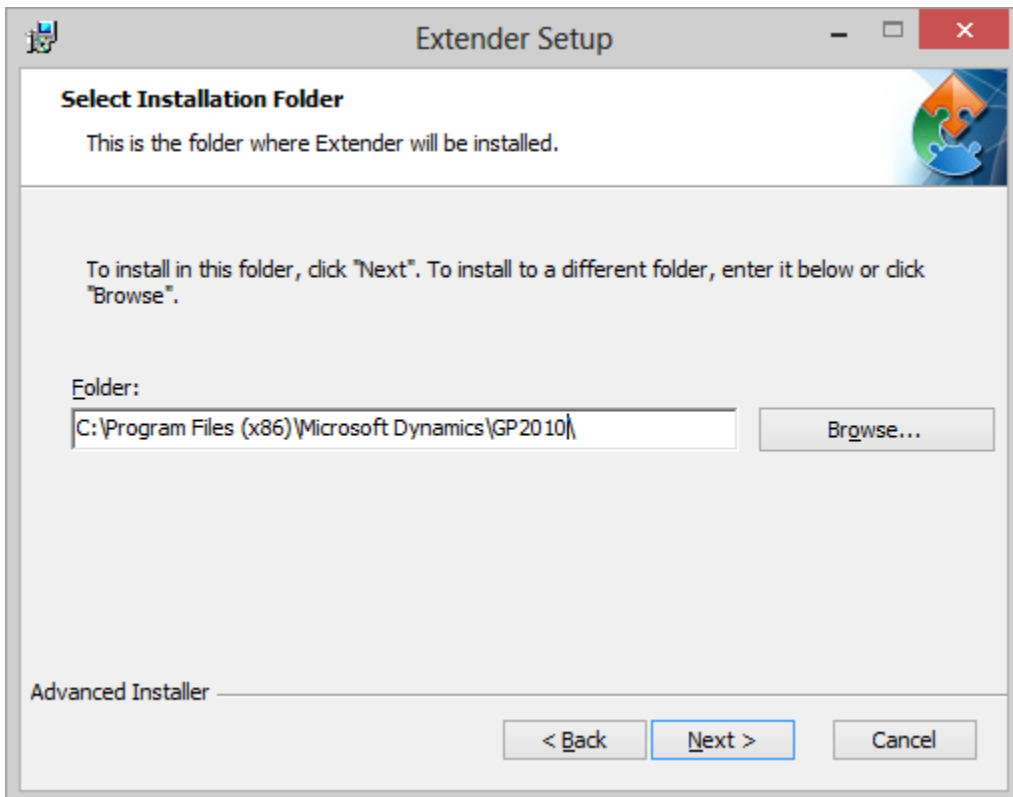


15. Run the "Extender11.msi" file.

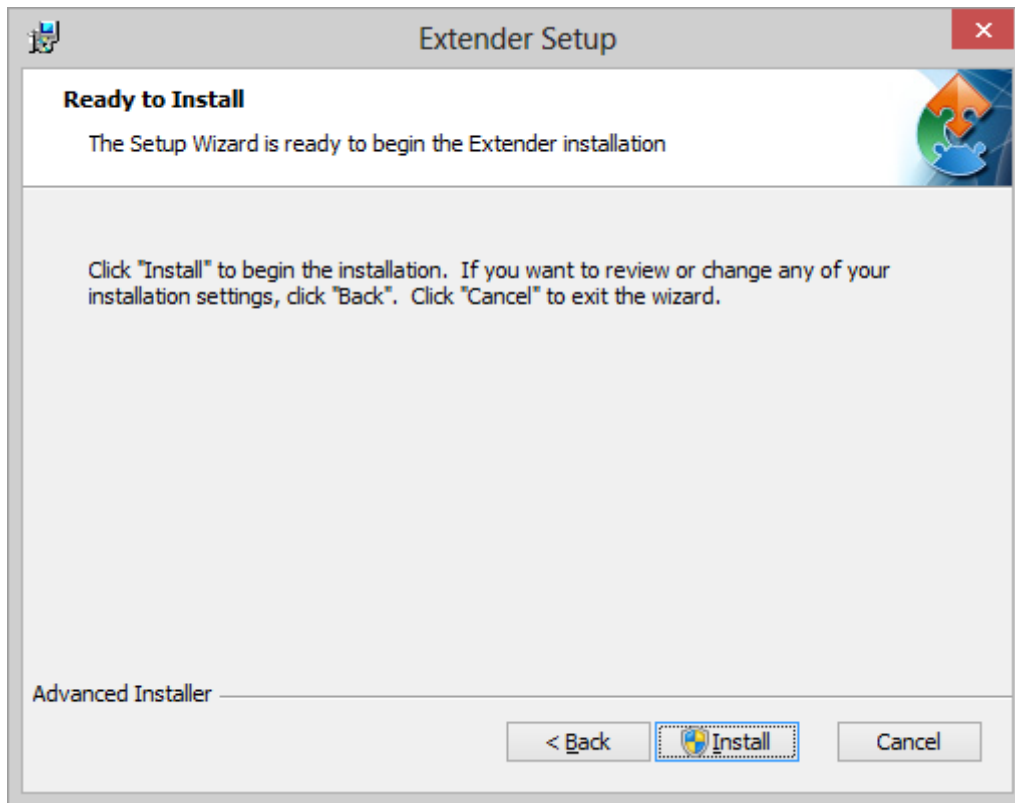
16. On the Welcome window, click Next.



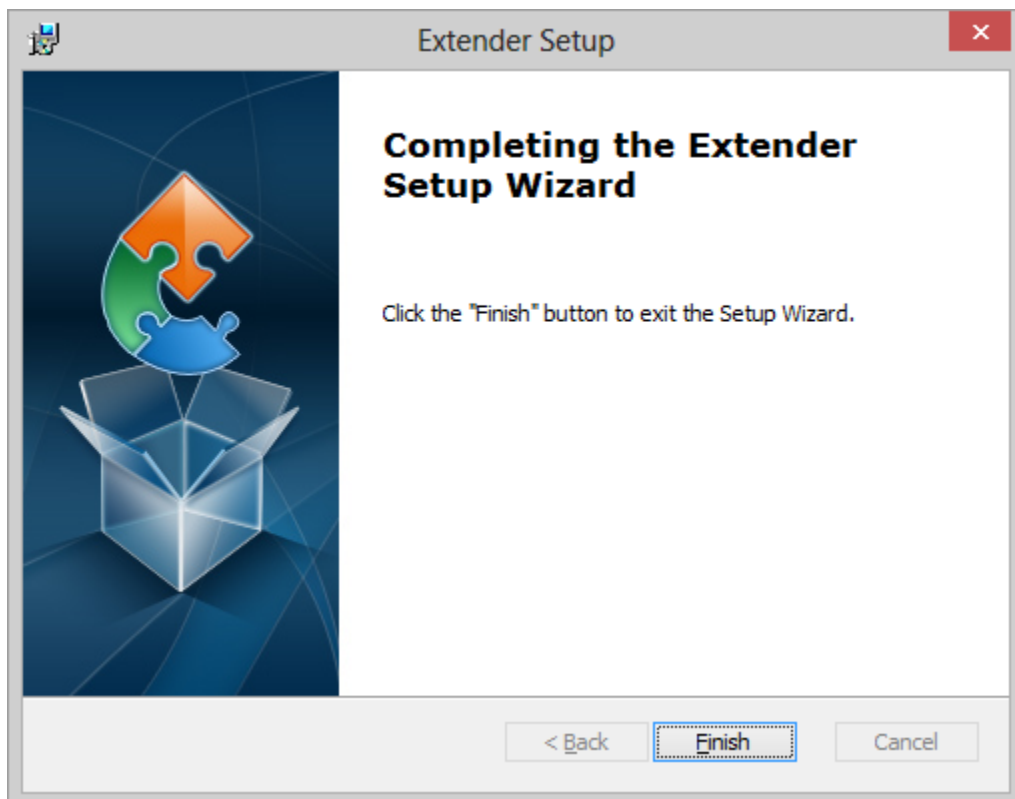
17. On the Select the location of the Microsoft Dynamics GP 2010 installation. Click Next.



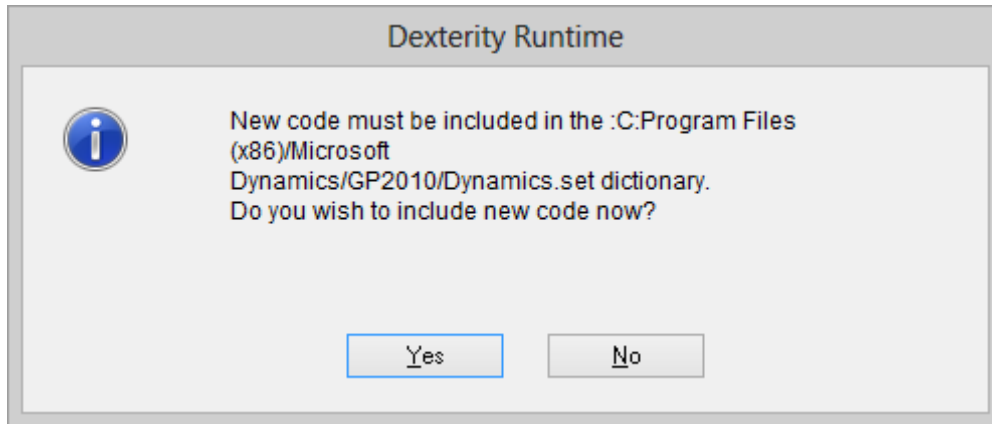
18. Click Install on the Ready to Install window.



19. When the installation is finished, click Finish.

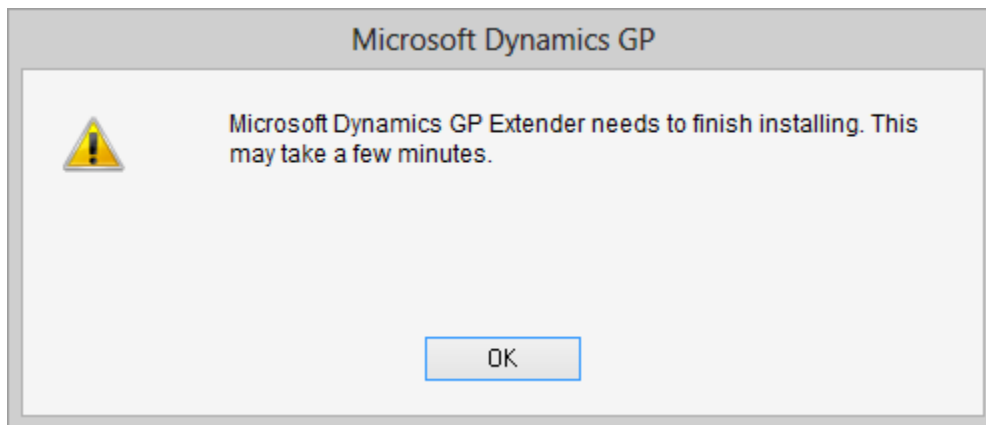


20. Launch Microsoft Dynamics GP 2010. Depending on the Operating System, you may need to use the Run as Administrator option so that the new code can be included.
21. Click Yes to include the new code when prompted.

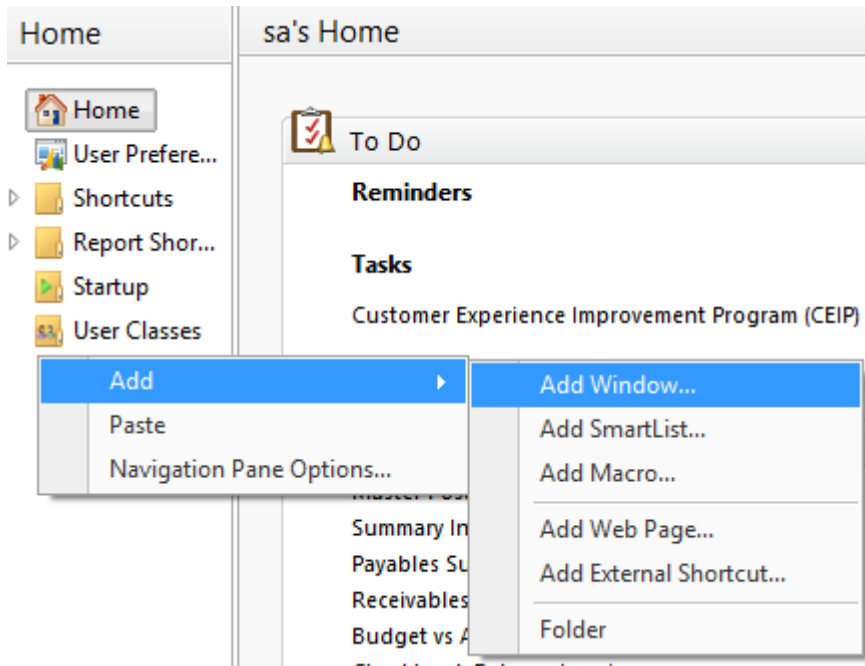


22. Once that is complete, log into Microsoft Dynamics GP 2010.

23. When prompted, click OK to allow Extender to finish installing. This may take a minute or two to complete.

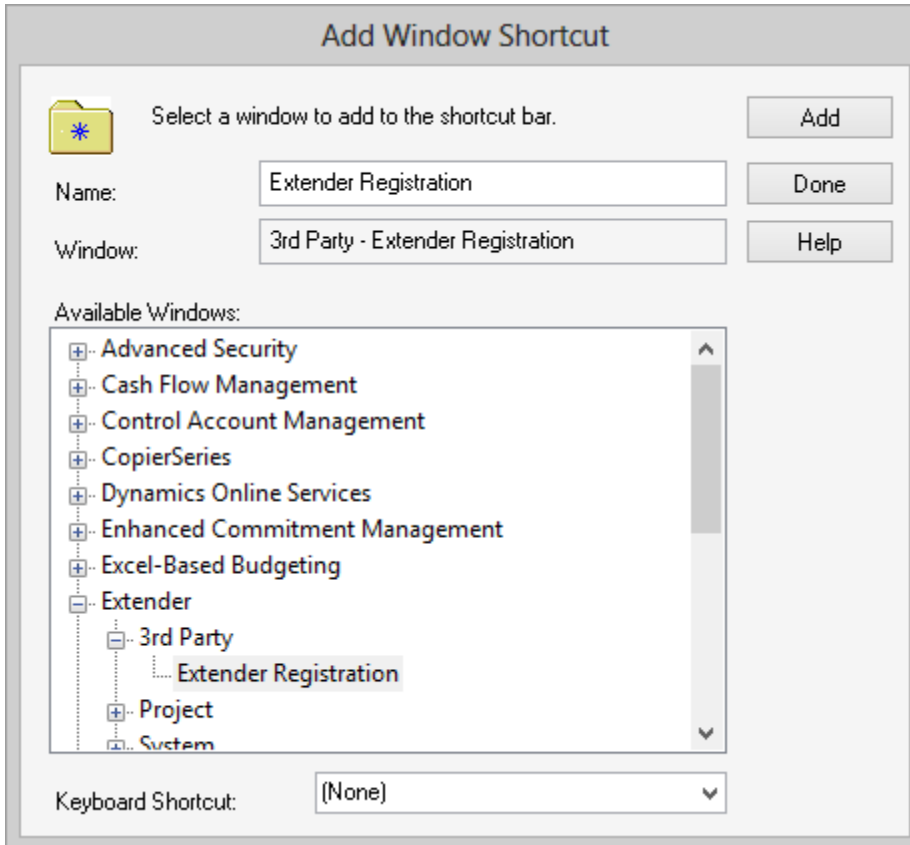


24. A processing window will pop up. You do not need to do anything with this window as it will automatically start processing. When it is complete, the window will go away.
25. Once the Extender installation is complete and GP is completely logged into, right click on the shortcut bar and select Add – Add Window.

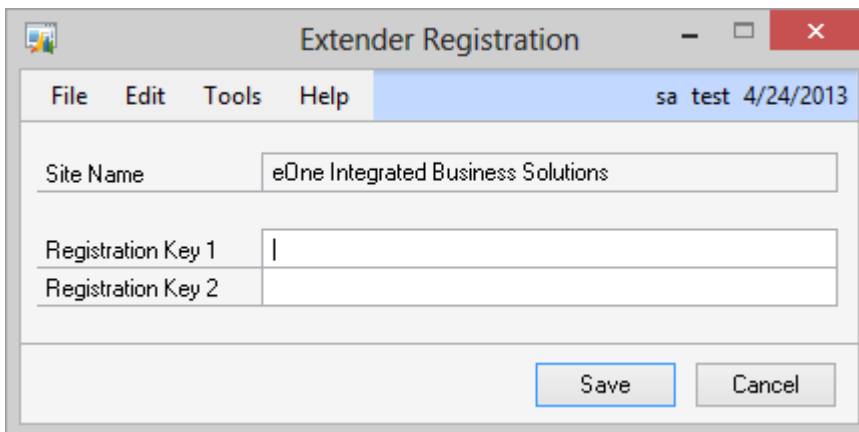


26. Expand Extender – 3<sup>rd</sup> Party and then select Extender Registration and click Add. Click Done.



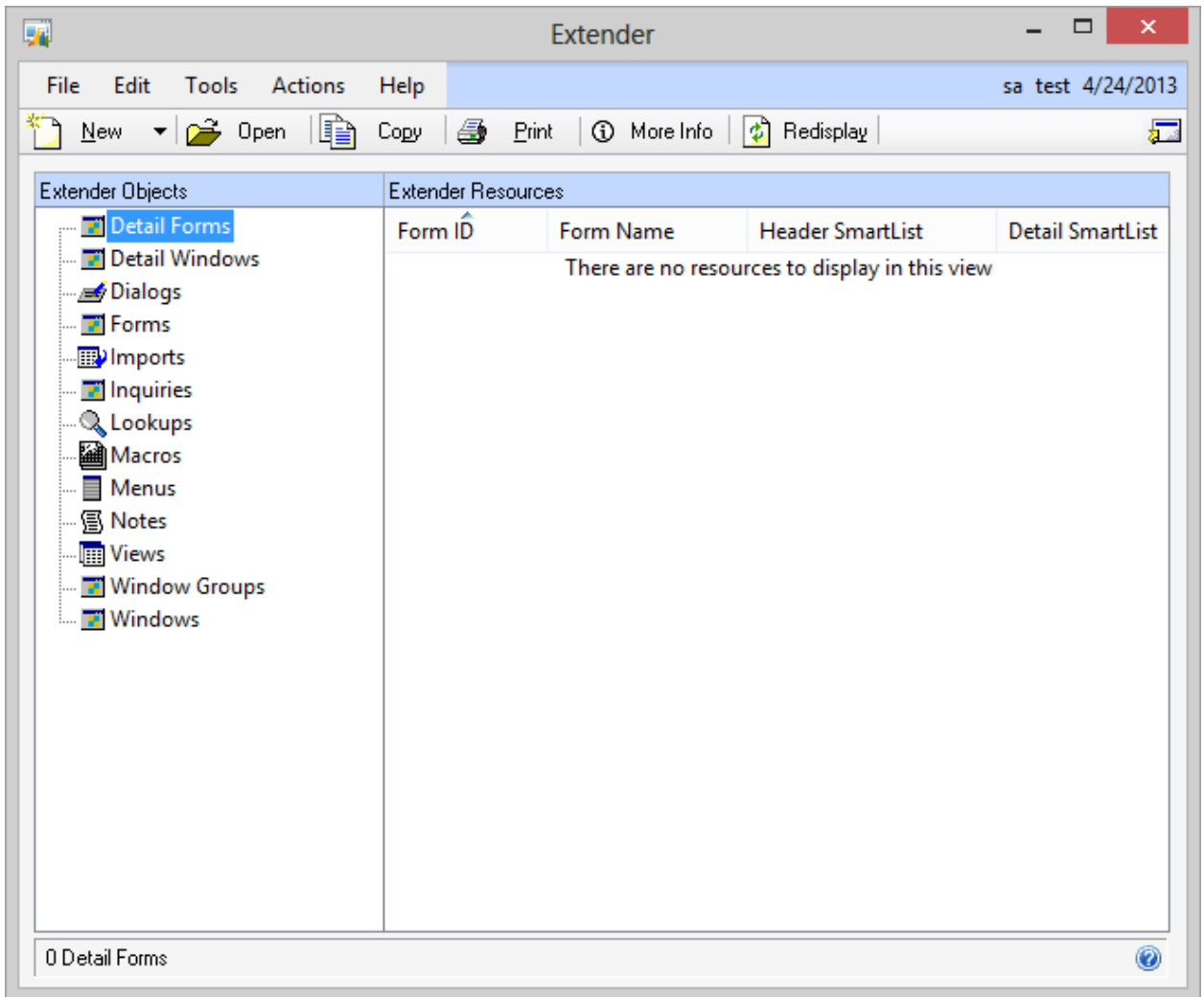


27. On the Shortcut bar, you should now have an Extender Registration option. Click on it to open the Extender Registration window.



28. Enter the Extender Registration Key you received into the Registration Key 1 field and click Save. The Registration Key 2 field should remain blank.

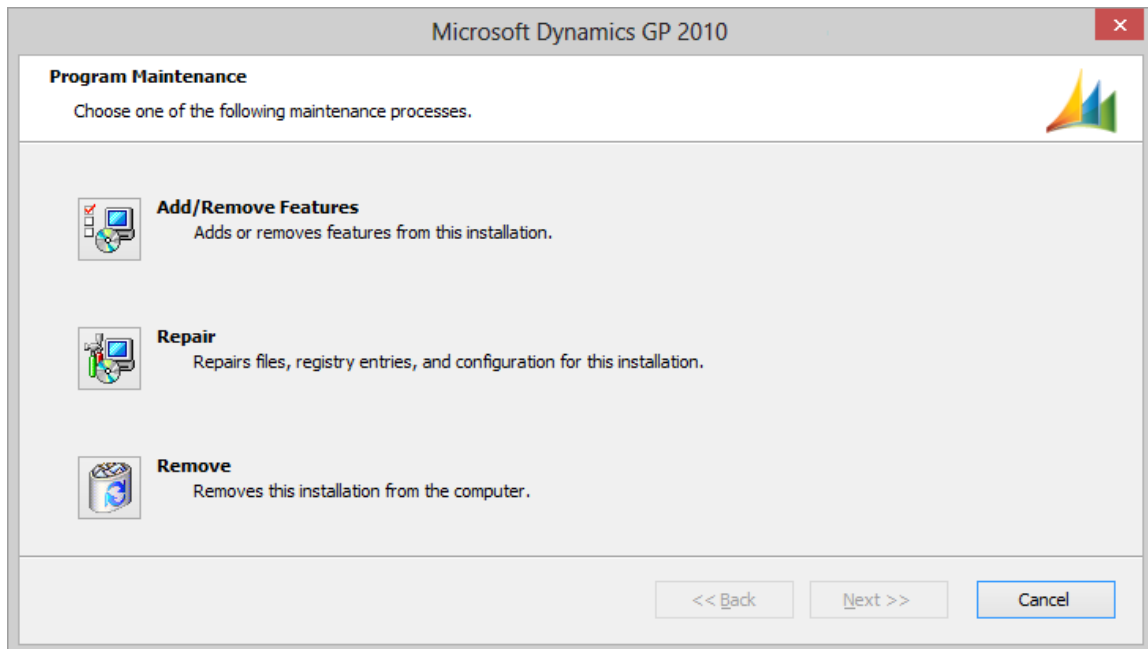
29. Verify that you are able to now use Extender Standard by going to Microsoft Dynamics GP – Tools – Extender – Extender. The Extender window should look like the window below.



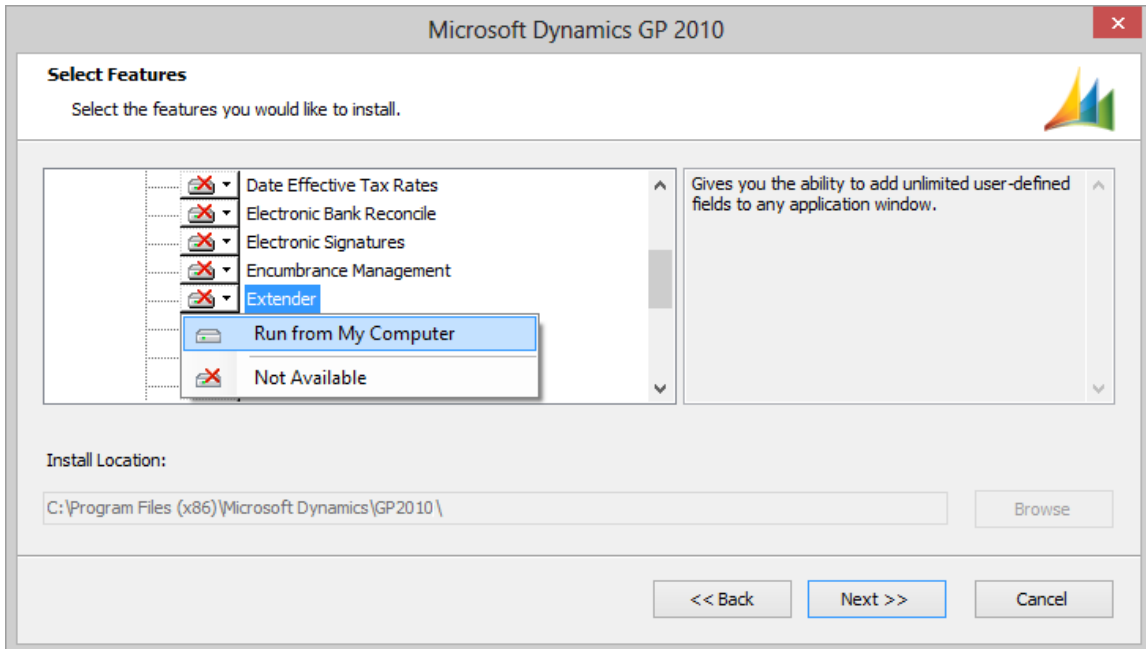
## Installation steps to install Extender on Additional Workstations

These steps will need to be completed to install Extender on each workstation where you want to be able to setup and/or use the Extender Resources such as Windows and Forms.

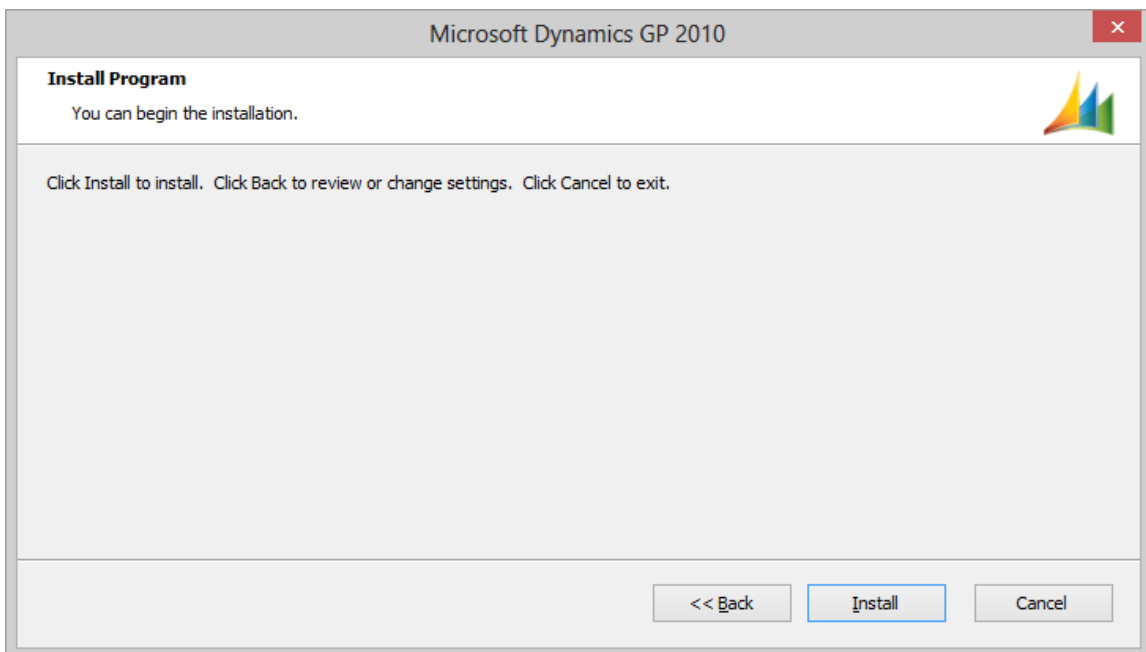
1. Add Extender to the Microsoft Dynamics GP installation by going to Programs and Features (Add/Remove Programs) in the Control Panel.
2. Select Change on the Microsoft Dynamics GP installation.
3. When prompted, select Add/Remove Features.



4. Scroll down in the list of features and find Extender. Right click on it and select “Run from My Computer”.

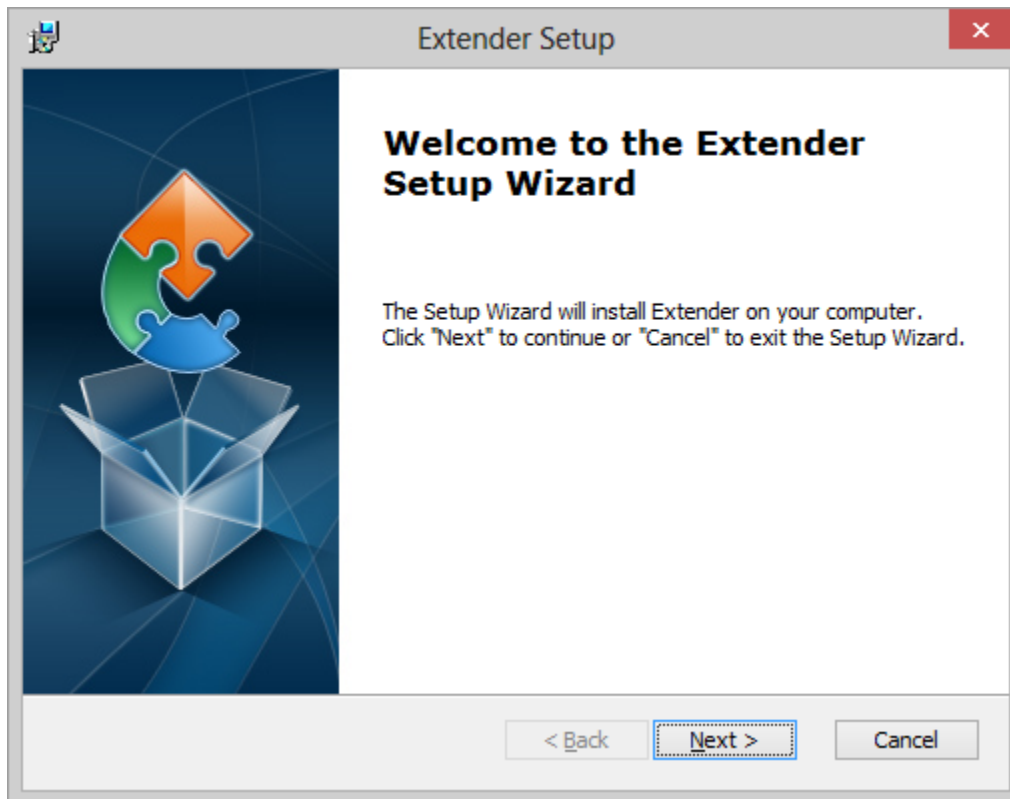


5. The Red X on the icon will disappear to show it is going to be available. Click Next.
6. Click Install to install the Extender Feature into Microsoft Dynamics GP.

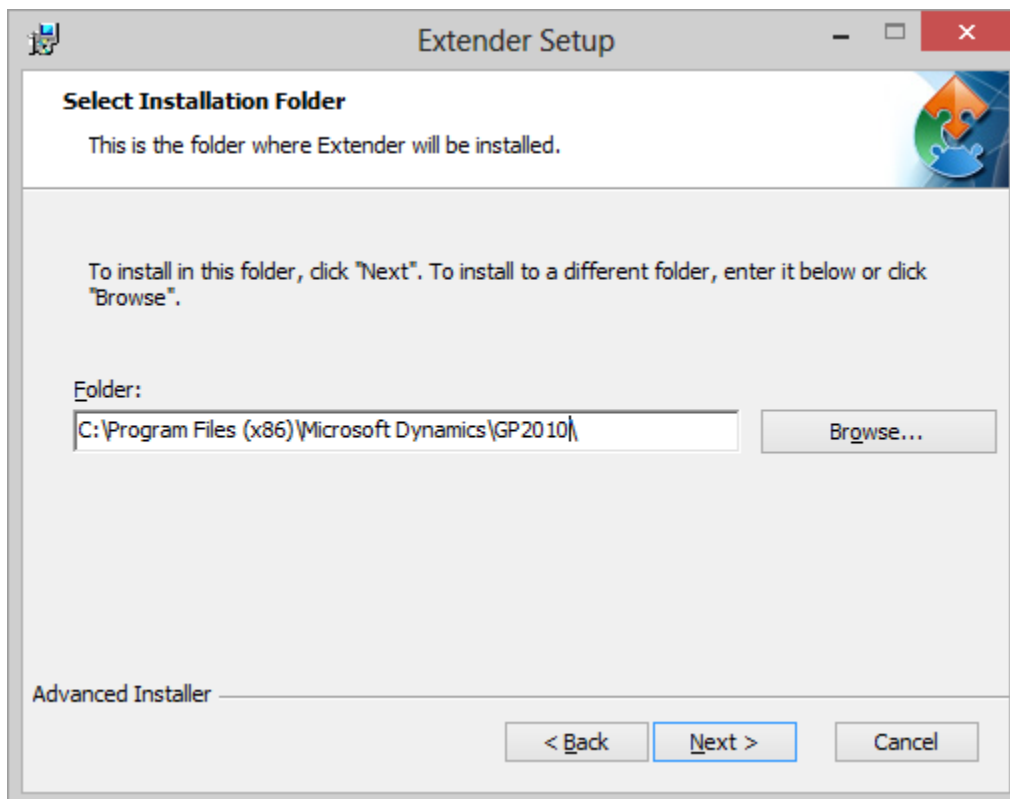


7. Click Exit when the installation is complete.
8. Run the Extender11.msi file.

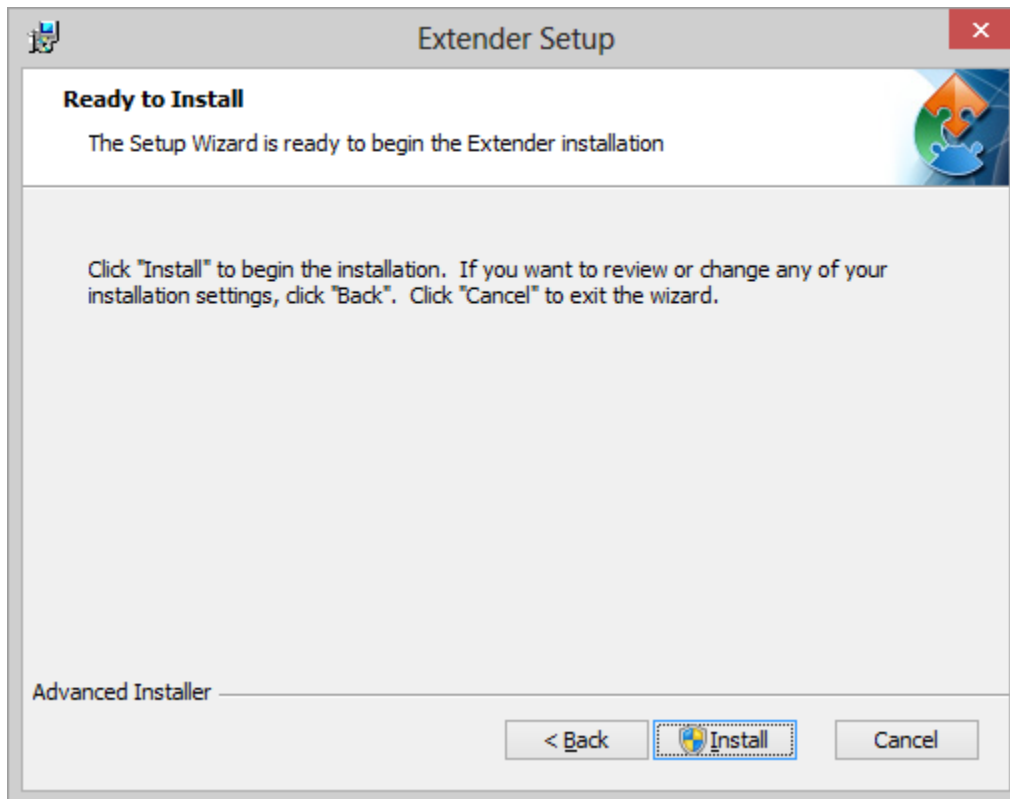
9. On the Welcome window, click Next.



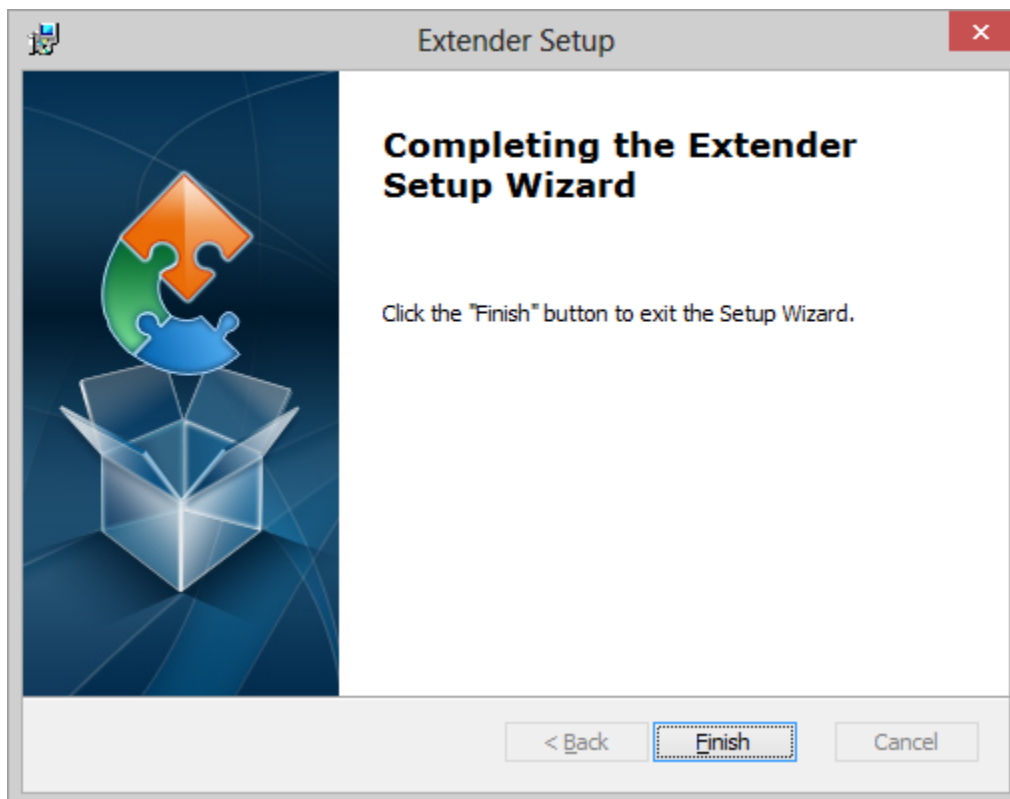
10. On the Select the location of the Microsoft Dynamics GP 2010 installation. Click Next.



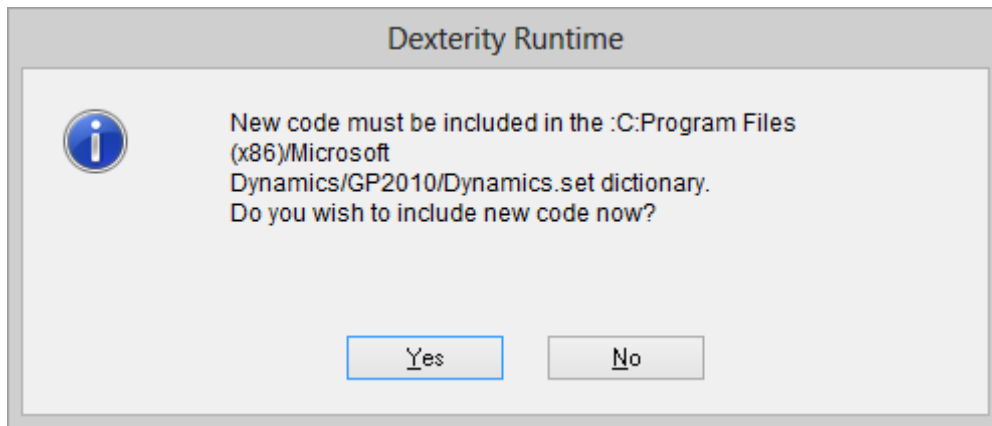
11. Click Install on the Ready to Install window.



12. When the installation is finished, click Finish.



13. Launch Microsoft Dynamics GP 2010. Depending on the Operating System, you may need to use the Run as Administrator option so that the new code can be included.
14. Click Yes to include the new code when prompted.



15. Once that is complete, log into Microsoft Dynamics GP 2010.